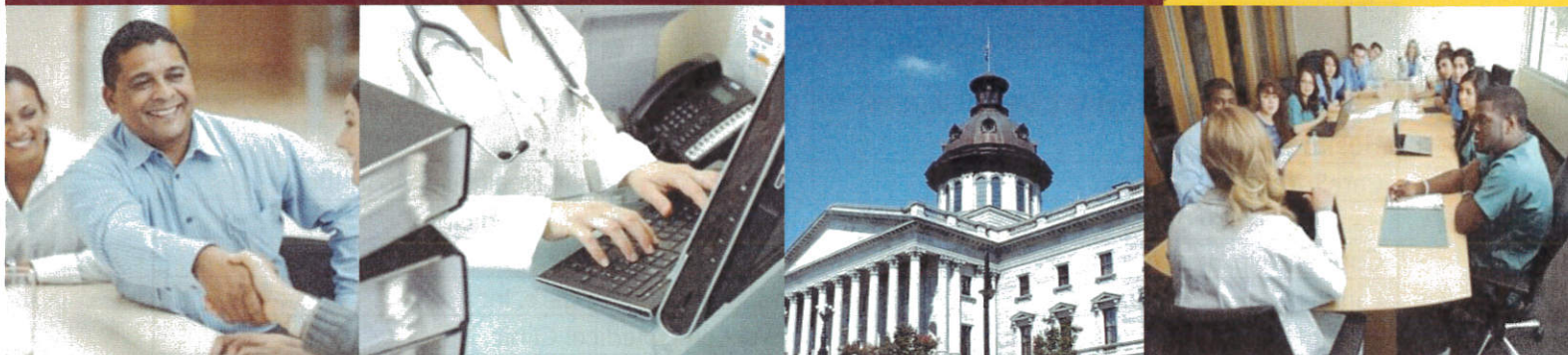
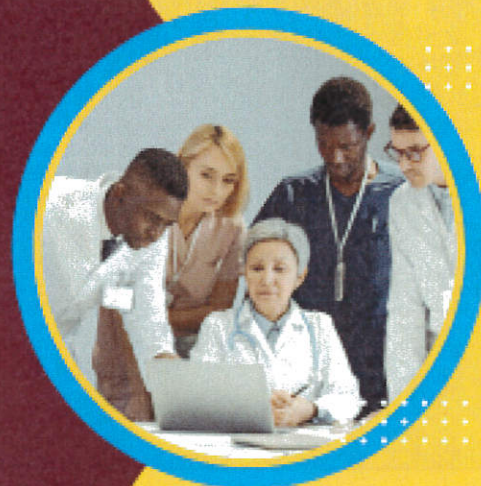




SOUTH CAROLINA PRIMARY HEALTH CARE ASSOCIATION

Access to Quality Health Care for All of South Carolina

About Us



For over 40 years, the South Carolina Primary Health Care Association (SCPHCA) has been the membership organization that represents all of South Carolina's community health centers, which are an integral part of the primary health care system in our state. The mission of the SCPHCA is to provide a coordinating structure to ensure access to community-based primary, behavioral, and other health care services to all South Carolinians.

The SCPHCA provides capacity building services and engages in initiatives to maintain, strengthen, and expand community health centers.

***SCPHCA Membership Benefits include:**

Training and Technical Assistance:

- Financial Operations
- Clinical and Health Care Improvement
Outreach and Enrollment
- Emergency Preparedness
Health Center Compliance
- Workforce Recruitment and Retention
- Information Technology

Other Benefits:

- Shared Services
- State and Federal Advocacy
- Peer Networking Opportunities
- Strategic Planning
- Research and Analysis

Please note: This is not an all-inclusive list.

***Benefits are determined by level of membership.**

Updated August 2025

3 Technology Circle, Columbia, SC 29203

803-788-2778 (Phone)

www.scpzca.org

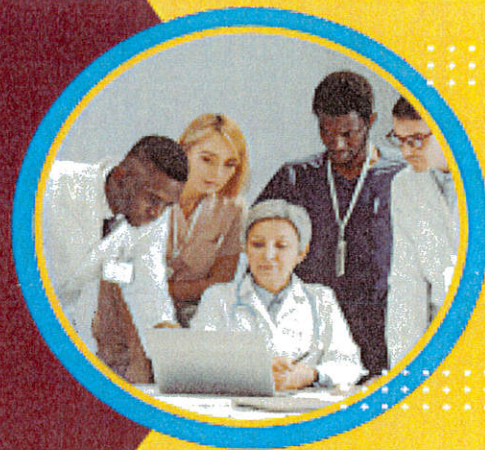
This publication is supported by the Health Resources and Services Administration (HRSA) of the U.S. Department of Health and Human Services (HHS) as part of a cooperative agreement award. The contents are those of the author(s) and do not necessarily represent the official views of, nor an endorsement, by HRSA, HHS, or the U.S. Government. For more information, please visit HRSA.gov.



SOUTH CAROLINA PRIMARY HEALTH CARE ASSOCIATION

Access to Quality Health Care for All of South Carolina

Membership



Organizational Level

Affinity Health Center	Little River Medical Center, Inc.
Beaufort-Jasper-Hampton Comprehensive Health Services, Inc.	Low Country Health Care System, Inc.
CareSouth Carolina, Inc.	New Horizon Family Health Services, Inc.
Carolina Health Centers, Inc.	North Central Family Medicine
Cooperative Health	Plexus Health
Family Health Centers, Inc.	ReGenesis Health Care, Inc.
Fetter Health Care Network, Inc.	Rosa Clark Medical Clinic
Foothills Community Health Care, Inc.	Rural Health Services, Inc.
Genesis Healthcare, Inc.	St. James Health and Wellness, Inc.
Health Care Partners of SC, Inc.	Sandhills Medical
HopeHealth, Inc.	Tandem Health SC, Inc.

Corporate Level

Absolute Total Care
Chronic Care Staffing
Select Health of South Carolina

Affiliate / Look-Alike Level

CareTeam Plus Family Health and Specialty Care
Unity Health on Main, Greenville

Associate Level

Christ Community Health Services Augusta, Inc.
Community Integrated Management Services, LLC
Medical Associates Plus
PALSS, Inc.
Palmetto Care Connections

Individual Level

Dashika Bethune	Carolyn Emanuel-McClain
Wallace Brown	Jacqueline Mendes-Baer
Eralphia Eckles, Jr.	Lathran J. Woodard

Updated August 2025

3 Technology Circle, Columbia, SC 29203

803-788-2778 (Phone)

www.scpzca.org

This publication is supported by the Health Resources and Services Administration (HRSA) of the U.S. Department of Health and Human Services (HHS) as part of a cooperative agreement award. The contents are those of the author(s) and do not necessarily represent the official views of, nor an endorsement, by HRSA, HHS, or the U.S. Government. For more information, please visit HRSA.gov.



SOUTH CAROLINA PRIMARY HEALTH CARE ASSOCIATION

Access to Quality Health Care for All of South Carolina



What is a Community Health Center?



Community Health Centers (CHCs)—also known as Federally Qualified Health Centers (FQHCs)—are non-profit, community-based organizations that deliver high-quality, affordable health care to people who face barriers such as cost, distance, language, or social background. These centers are located in medically marginalized areas where access to care is limited. CHCs offer comprehensive services, including primary care, preventive services, and often on-site dental, pharmacy, and behavioral health care. In South Carolina alone, they provide care to more than 446,000 residents, regardless of insurance status or ability to pay. By offering cost-effective care and reducing unnecessary emergency room visits, CHCs not only improve health outcomes—they also help save taxpayer dollars.

Community Health Centers:

- are located in **medically marginalized areas** with elevated poverty, higher than average infant mortality, and a physician shortage;
- are **governed by** a community board composed of 51% or more of CHC patients who represent the population served;
- are **open to all** residents, regardless of health insurance status or inability to pay;
- provide **comprehensive primary and other health care services**, including transportation, translation, and case management;
- **tailor services** to fit the specific needs and priorities of their communities and provide services in a linguistically and socially appropriate manner; and
- are **cost effective**, reducing costly emergency, hospital and specialty care, and save the health care system \$334.8 million in Medicaid spending.

SC Community Health Centers

25	Health Centers
297	Service Sites
46	Counties Served
446,515	Patients Served
1.90 million	Total Patient Visits
24%	Uninsured Patients

Data from HRSA Bureau of Primary Health Care
Uniform Data System Report - 2023

Updated August 2025

3 Technology Circle, Columbia, SC 29203 | 803-788-2778 (Phone) | www.scphca.org

This publication is supported by the Health Resources and Services Administration (HRSA) of the U.S. Department of Health and Human Services (HHS) as part of a cooperative agreement award. The contents are those of the author(s) and do not necessarily represent the official views of, nor an endorsement, by HRSA, HHS, or the U.S. Government. For more information, please visit HRSA.gov.



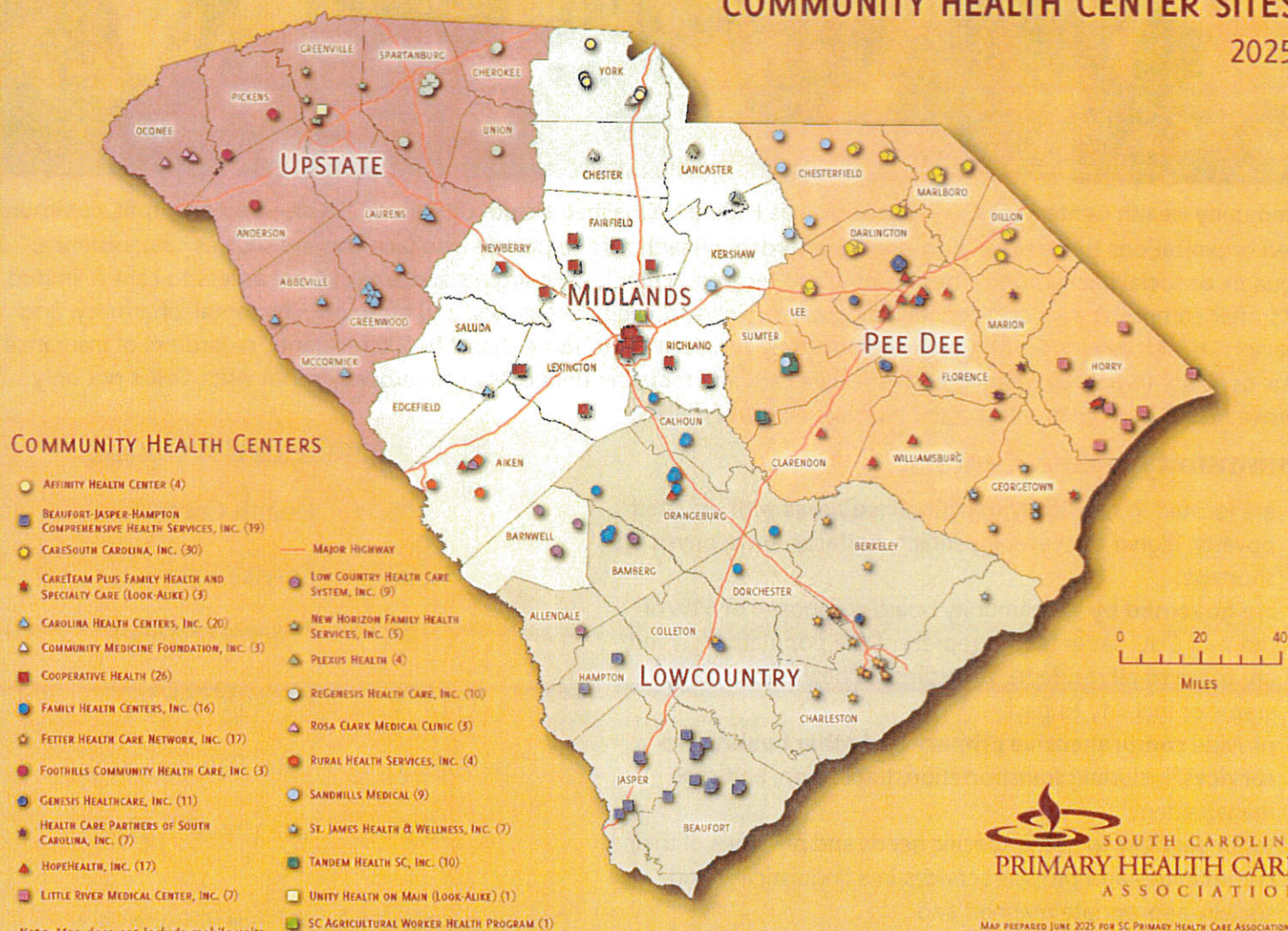
SOUTH CAROLINA PRIMARY HEALTH CARE ASSOCIATION

Access to Quality Health Care for All of South Carolina

Statewide Presence



COMMUNITY HEALTH CENTER SITES 2025



Updated August 2025

3 Technology Circle, Columbia, SC 29203

803-788-2778 (Phone)

www.scphca.org

This publication is supported by the Health Resources and Services Administration (HRSA) of the U.S. Department of Health and Human Services (HHS) as part of a cooperative agreement award. The contents are those of the author(s) and do not necessarily represent the official views of, nor an endorsement, by HRSA, HHS, or the U.S. Government. For more information, please visit HRSA.gov.